

UNIT HOUSE
COSMO
CT-J



MOBILE SPACE by SANKYO FRONTIER

JAPAN'S LEADING MODULAR SPACE PROVIDER

Providing modular buildings for any industry, anytime, anywhere.

Founded in 1969, we are Japan's leading modular space provider and manufacturer. Since our earliest days, Sankyo Frontier has pioneered industrial solutions including container bathtubs for construction sites, and two-storey parking systems. We see challenges as opportunities to innovate, and our practices are always guided by integrity and kindness to our employees, communities, and the environment.



Innovative

We strive to use the latest technology and techniques in our production



Cost Effective

Japanese-quality materials, design and manufacturing at economical prices



Customer-first Design & Service Solutions

Your needs come first — we offer installation services and customisation options to suit your needs

THE MODULAR ADVANTAGE



DURABLE

Strong enough to withstand nature's harshest elements



FLEXIBLE

Designed to be easily remodeled, relocated and removed for your needs



FAST

Minimal on-site construction time and manpower needed with pre-assembly in factory



SAFE

Safety comes first at every stage, from production to installation

UNIT HOUSE COSMO CT-J



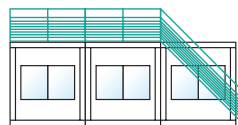
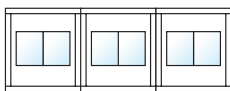
CT-72J

5-unit, 2-storey building
3-storey buildings are possible. Please contact us for more information.

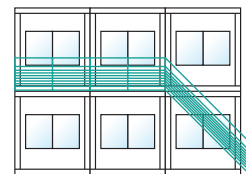
Achieving both safety and efficacy in construction.

SAFETY-ORIENTED INSTALLATION

By installing the stairs before building the second floor, the stairs can be used midway during construction, making it possible to go up and down safely.



Stairs and walkway installation



2nd storey installation

BUTTERFLY CONSTRUCTION METHOD

By adopting the "butterfly method", in which columns are automatically erected by lifting the roof, we have made it possible to improve work safety and efficiency.



① Arrives flat for installation



② Lifting the roof



③ Erecting the columns



④ Fastening

WALKWAY INSTALLATION

By simplifying the mechanism of fastening the walkway, worker safety is ensured.^A



⑤ Walkway is installed from the rooftop of the first-storey

SIMPLIFIED ON-SITE ELECTRICAL WIRING

By incorporating the electrical wiring in advance, work on-site is simplified. Construction can be carried out speedily and safely.



^A: Specifications may vary depending on the plan



An environment that is comfortable and easy to work in.

CT-J Interior | Fixtures and floor finishing are optional

Benefits of the CT-J Unit House

QUICK AVAILABILITY

Immediately available for rental in two standard sizes:

- » 8ft x 18ft (2.44m x 5.5m)
- » 8ft x 22ft (2.44m x 6.7m)

SPEED IN ASSEMBLY

Up to 8 units can be assembled in 1 day

IDEAL FOR

Industrial:

- » Construction site offices
- » Dormitories
- » Training rooms
- » Temporary emergency housing

Retail:

- » Shops
- » Cafes and restaurants
- » Showrooms

Optional Add-ons

A wide variety of optional parts can be added, combined and changed freely according to application. Comfort and livability are further improved.

PANELS

Depending on how they are used, you can freely change the position of the windows and doorways.



Wall Door Ventilation Air-conditioner



Window Ventilation window Sliding-door

CAPSULES

Easy to install inside the unit, creating a more comfortable office environment.



Entrance Space Kitchen
 Depth 600mm / 23.6" Depth 650mm / 25.6" Depth 650mm / 25.6"
 Width 1,736mm / 68.35" Width 1,670mm / 65.75" Width 1,670mm / 65.75"



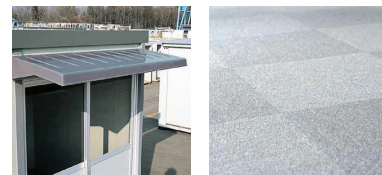
Shower^B Flush toilet
 Depth 850mm / 33.5" Depth 840mm / 33"
 Width 1,670mm / 65.75" Width 1,670mm / 65.75"

EQUIPMENT

A variety of options that will enhance ease of work and living comfort.



Partition Blinds



FRP eaves Tile carpet

^B: Boiler installation work carried out separately



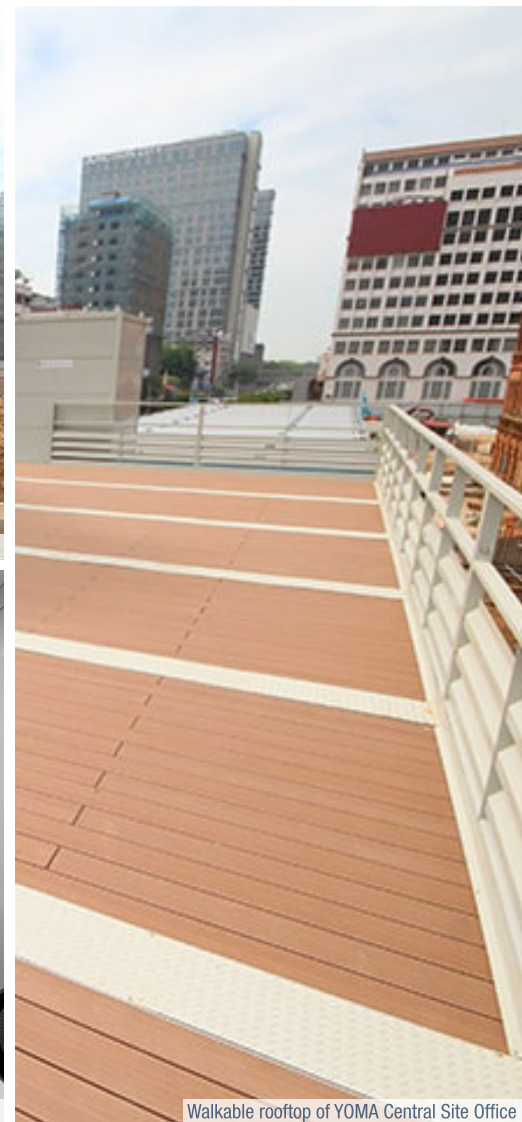
Japanese School Yangon, Myanmar



Interior of Japanese School



YOMA Central Site Office Yangon, Myanmar



Walkable rooftop of YOMA Central Site Office



Interior of MPT Office Yangon, Myanmar



Interior of MPT Office

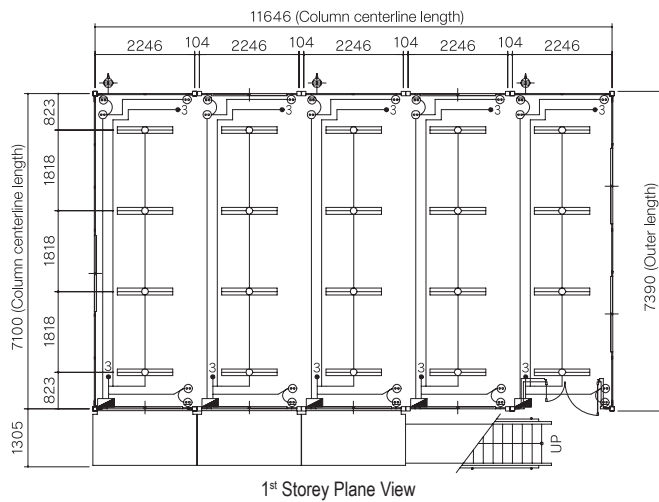


Interior of Emergency Temporary Housing

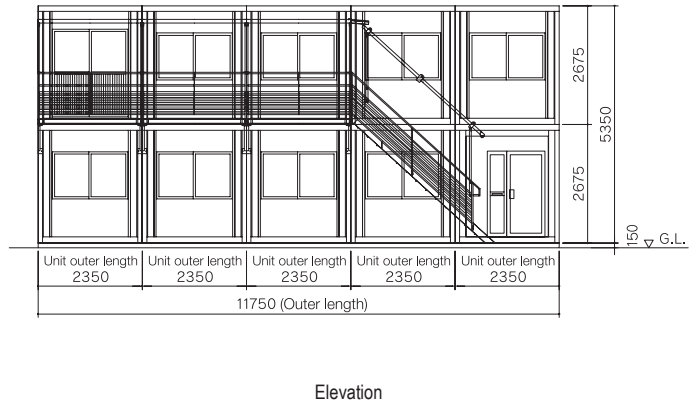
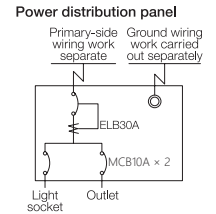


Large-scale Event Japan

Product Specifications



Name	Symbol	Specification
Lighting fixture		FHF-32W 2 lights (inverter type)
Power distribution panel		Shown in another figure
Outlet		Ceiling mounted 2P 230V 10A
Outlet		Wall mounted 2P 230V 10A
3-way switch		1P 300V 10A
Ventilation		Wall mounted 20cm



Type	CT-54J	CT-72J
External Dimensions (LxWxH)	5890 x 2350 x 2675	7390 x 2350 x 2675
Total Floor Area	12.57 m ² 135.3 ft ²	15.94 m ² 171.58 ft ²
Height	2825 (When foundation is H150)	
	2343 (Ceiling)	
Structure	Steel Construction (Light Steel Frame Construction)	
Roof	Metal Folded Plate Roof (Thickness = 0.5)	
Ceiling	Finishing: Coated Plywood Board (Thickness = 4)	
	Insulation Material: Styrene Foam (Thickness = 25)	
Wall	Moisture-proofing Sheet	
	Composite Panel (Outer Wall & Inner Wall: Coloured Steel Plate / Insulation: Styrene Foam Thickness = 25)	
Floor	Structural Plywood (Thickness = 12)	
	Floor Paint Finish	
Lighting Equipment	32W (Inverter Type) LED Light x 3 units	32W (Inverter Type) LED Light x 4 units
Electrical Equipment	Ventilator Fan (20cm)	
	Residual Current Circuit Breaker (16A) Circuit Breaker (10A x 2)	
Floor Surface Load Capacity	295kg / m ² <i>*Please consult us beforehand if you wish to use or install heavy objects</i>	
Gross Weight	Approx. 1530kg	Approx. 1950kg

1. Unmarked units: mm
2. If the first-floor section is a standalone, a second floor cannot be added
3. Installation may not be possible depending on the conditions
4. Design of buildings are subject to change without condition

SANKYO FRONTIER CO.,LTD. www.sankyofrontier-global.com

Sankyo Frontier Co., Ltd.
5 Shintoyofuta, Kashiwa City, Chiba, Japan 277-8539
T: +81-4-7133-6666 (Representative)
W: <http://www.sankyofrontier.com>
E: info@sankyofrontier.com

Sankyo Frontier Co., Ltd. Singapore Branch
150 Beach Road, #28-04 Gateway West, Singapore 189720
T: +65-6957-6268
info_sg@sankyofrontier.com

Sankyo Frontier Malaysia Sdn. Bhd.
#30-01, Q Sentral, 2A, Jalan Stesen Sentral 2,
Kuala Lumpur Sentral, Kuala Lumpur 50470, Malaysia
T: +60-3-2780-5831
E: info_my@sankyofrontier.com

Sankyo Frontier Myanmar Co., Ltd.
95-A, Level 6, Room No-601, Unit D, Kyaik Wine Pagoda Road,
8th Mile, Mayangone Township, 11061, Yangon, Myanmar
T: +95-1-664-117
E: info_mm@sankyofrontier.com

Connect with Us: @SankyoFrontierGlobal

@sankyofrontier

Sankyo Frontier Co., Ltd.