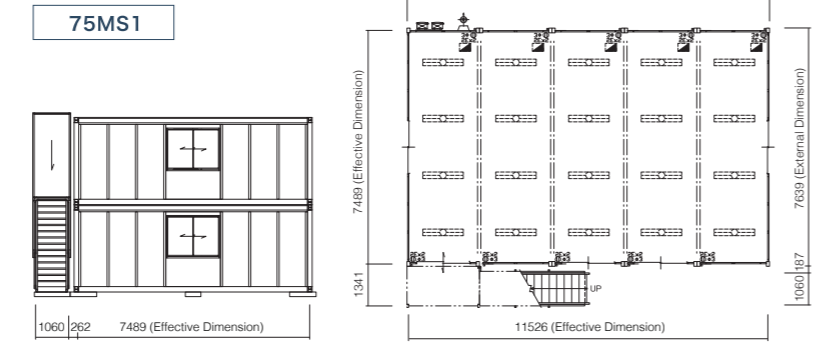
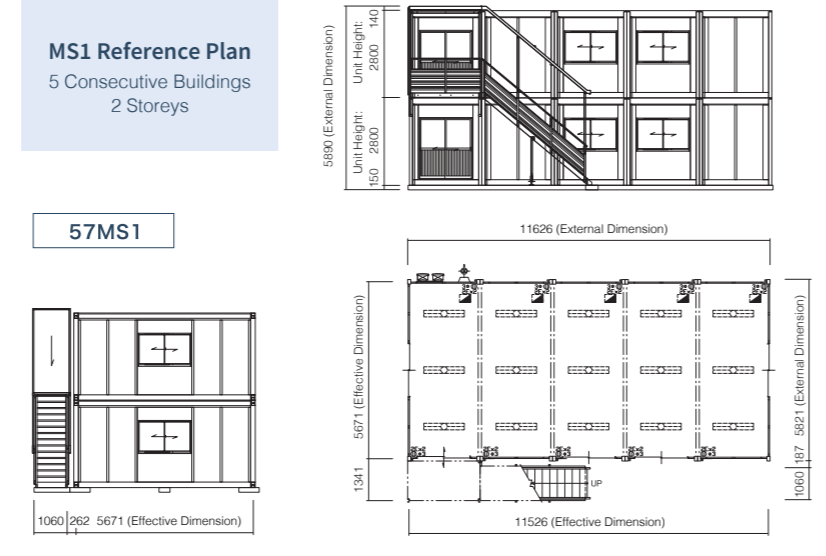
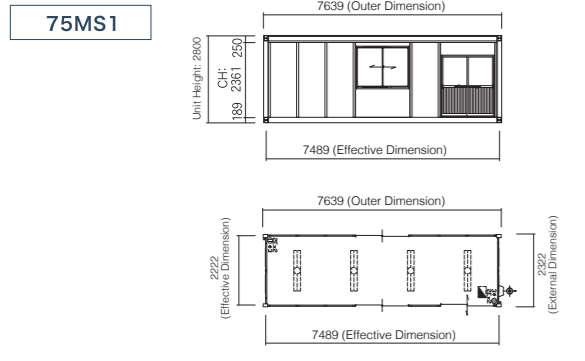
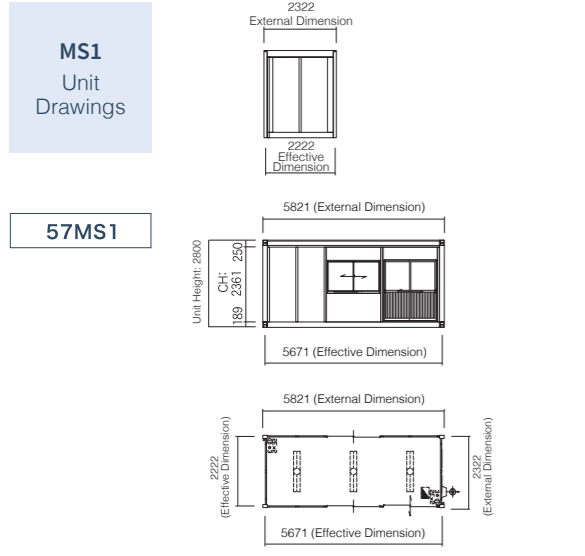


Mobile space is panel-type building. As it is a structure that does not require fixed walls, you have the freedom to design your dream space with the combination of various optional parts.



SPECIFICATION	57MS1	75MS1
External Dimension	5821 x 2322 x 2800	7639 x 2322 x 2800
Total Floor Area	12.60m <sup>2</sup>	16.64m <sup>2</sup>
Ceiling Height	2361	
Structure	Light Steel Frame	
Column Size	150 x 100	
Roof	Galvanized Steel Sheet (Thickness = 0.5)	
Ceiling	Finishing: Volcanic Vitreous Multilayer Board (Thickness = 6)   Insulation: Phenolic Foam (Thickness = 20)   Moisture-proofing Sheet	
Wall	Composite Panel (Outer Wall & Inner Wall: Coloured Steel Plate, Insulation: Phenolic Foam Thickness = 40)	
Floor	Hardened Wood Chip Cement board (Thickness = 18)   Floor Paint Finish	
Luminaire Device	LED Light (Inverter Type) x3 units	LED light (Inverter Type) x4 units
Electrical Equipment	Ventilator Fan (10 cm, 20 cm)   Single Phase 3 Wire   Earth-leakage Circuit Breaker (30A)   Branch Circuit Breaker (20A x2)	
Floor Load	295kg/m <sup>2</sup> ※Please contact us in advance for consultations in special cases (e.g. installing heavy weights on the floor).	
Snow Load	100 cm	70 cm
Allowable Load per Area	About 1,690kg	About 2,240kg

Dimension units: mm ※Product specifications are also subject to change without notice. ※Please note that catalog photographs & samples may differ slightly from actual colors. ※Building construction application is necessary when building. ※It may be subject to certain restrictions. ※In the event where installation is impossible due to entry routes to the installation site, conditions of the side, etc., please contact us for more details.

**SANKYO FRONTIER CO.,LTD.** [www.sankyofrontier-global.com](http://www.sankyofrontier-global.com)

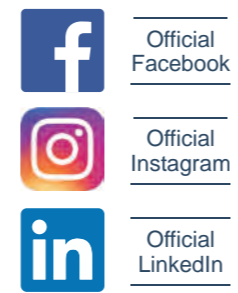
**Sankyo Frontier Co., Ltd. (Head Office)**  
5 Shintoyofuta, Kashiwa City, Chiba, Japan 277-8539  
T: +81-4-7133-6666 (Representative)  
W: <http://www.sankyofrontier.com>  
✉ [info@sankyofrontier.com](mailto:info@sankyofrontier.com)

**Sankyo Frontier Myanmar Co., Ltd.**  
95-A, Level 6, Room No-601, Unit D,  
Kyaik Wine Pagoda Road, 8th Mile,  
Mayangone Township, Yangon 11061, Myanmar  
T: +95-1-664-117  
✉ [info\\_mm@sankyofrontier.com](mailto:info_mm@sankyofrontier.com)

**Sankyo Frontier Malaysia Sdn. Bhd.**  
#30-01, Q Sentral, 2A, Jalan Stesen Sentral 2,  
Kuala Lumpur Sentral, Kuala Lumpur 50470, Malaysia  
T: +60-3-2780-5831  
✉ [info\\_my@sankyofrontier.com](mailto:info_my@sankyofrontier.com)

**Sankyo Frontier Co., Ltd. Singapore Branch**  
150 Beach Road, #28-04 Gateway West, Singapore 189720  
T: +65-6957-6268  
✉ [info\\_sg@sankyofrontier.com](mailto:info_sg@sankyofrontier.com)

CONNECT WITH US



**MS1**

At last, the Mobile Space of the next generation has appeared.  
**MOBILE SPACE** by SANKYO FRONTIER



MS1

# ONE FRAME

Utilizing the speedy "Butterfly Construction" method, the structure actualizes by simply connecting pillars and panels with the frame. Please experience the Mobile Space of the next generation.

## STRUCTURE

Cleared strict earthquake resistance standards and attained the building application confirmation (in Japan).

A simple module designed for both horizontal and vertical connection.

## DESIGN

Simple, sophisticated design.

Regardless of whether it is a sale or rental unit, you can freely customize spaces to your liking.

## FUNCTION

Multi-functional and flexible usage.

By combining various options together, you can create the space of your dreams.



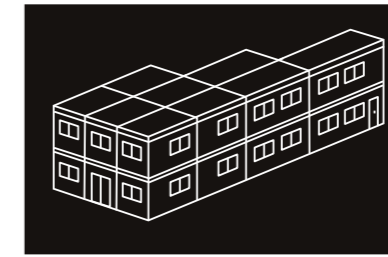
We can combine a vast array of options, such as a bright off-white interior, FIX glass panels, louver panels and double doors. Images contain some options for sale units.

## STRUCTURE



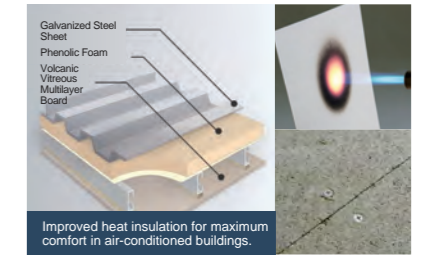
Cleared strict earthquake-resistance standards and attained the confirmation for building application.

The pillar size is 150mm x 100mm. This standardized design is based on Shizuoka Prefecture's earthquake criterion, which is the strictest in Japan. A maximum pillarless space of 9m is within the allowable limit of design for construction.



A redesigned module that can be connected vertically and horizontally.

All size variations and module designs are unified. As units can be connected vertically and horizontally, you can combine various sizes to suit your preferences and needs.



Improved heat insulation for maximum comfort in air-conditioned buildings.

Your life matters to us. As such, our products are fire-proofed for safety.

We have incorporated fire-resistant phenolic foam in our wall and roof insulation. The thickness has increased to 1.6x\* and as a result, its heat insulating capacity greatly increases. Attached onto the ceiling are incombustible certified ceramic sheets. Corrosion-resistant cement boards are also used, which also improves walking comfort and heat-resistance.

\* Compared with CT-J

## DESIGN



Simple, sophisticated design that can be used for both temporary and main installations.

Box Connection: A design concept where by buildings are simply installed by assembling the parts as stated in the manual. The connection joint between pillars and panels has been thoughtfully designed, and temporary joints are not used for the product.



Regardless of whether it is a sale or rental unit, you can freely customize spaces to your liking.

With a wide array of options such as FIX glass, louver panels, wave panels etc., there are many possibilities and freedom for design. Both the exterior and interior can be freely customized, for rental and sale units.

(Patent: 6284979)



Stair installation before the setting of the 2nd floor ensures safety.

Speed and safety in design to save construction time.

When the roof is hoisted, pillars will automatically erect. This is the "butterfly construction method", which is a design that prioritizes safety and enables work to be done from inside the room, such as the installation and maintenance of panels and capsules. It is also safe to stand on the roof.

(Utility Model: 3205191)

## FUNCTION

Exterior staircases are possible as well.

The width of the staircase is about 1.2m. You can also install staircases and corridors on the shorter side of the building.

(Patent: 6290294)



CAPSULE <Kitchen> <Toilet>

No extra space is required. Piping systems are suitable for all sides of the building.

(Utility Model: 3205992)



EPS CEILING

An organised wiring system is installed inside the ceiling.

STANDARD LED LIGHTING EQUIPMENT

This saves 50% of the running costs. \* As compared to conventional products.



A new panel option that improves both privacy and aesthetics.

\* There is a wide variety of product options for you to choose from.



AIR-CON PANEL

Indoor maintenance is possible. Overhead air-con installation.

(Patent: 6306079)



ELECTRICITY DISTRIBUTION PANEL

Single phase, 3-wire system. 200V electric bulb. 1.5x power capacity.

\* Compared with CT-J (Patent: 5035730)



STEEL FOUNDATION

Adjustable Height | Various Height Choices | Corrosion Resistant | Improved Design

\* Delivery time may vary depending on products. (Utility Model: 3205991)